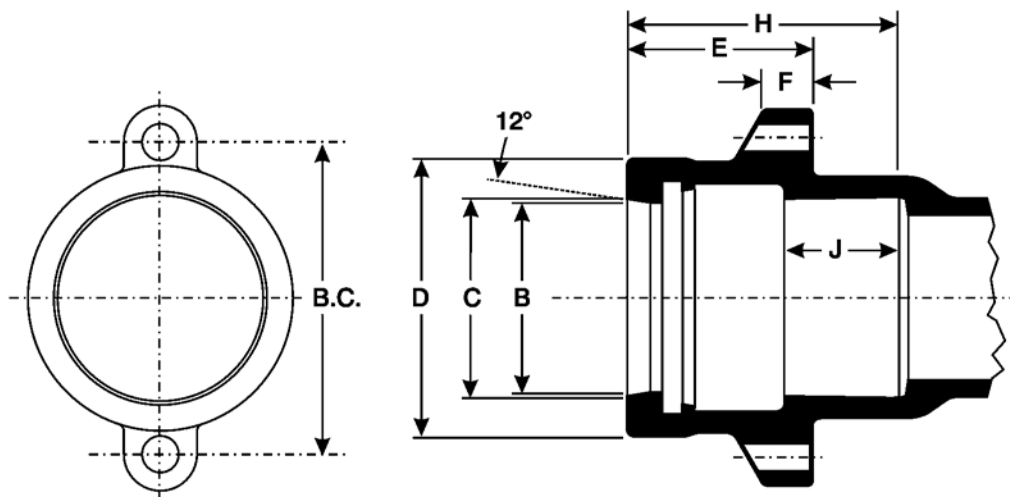


KINGER

3" - 16" DUCTILE IRON PUSH-ON JOINT FITTINGS, CLASS 350

BASIC SPECIFICATIONS

MATERIAL	Ductile Iron ASTM A536
PRESSURE	350 PSI Water Working Pressure (CLASS 350)
TESTING	In accordance with AWWA C153 (ANSI A21.53)
LAYING LENGTH	Short body design - straight section of body deleted to provide a more compact and less heavy fitting without reducing strength or flow characteristics, in accordance with AWWA C153 (3"-16")
CEMENT LINING	In accordance with AWWA C104 (ANSI A21.4)
COATING	Tar coated (bituminous) inside and out in accordance with AWWA C104 (ANSI A21.4)
GASKETS	SBR in accordance with AWWA C111 (ANSI A21.11)
STANDARDS	AWWA C153 (ANSI A21.53-88_ for Compact Ductile Iron Fittings 3"-16" for water and other liquids.



Dim.	B	C	D	B.C.	H	J	E	F
3	4.07	4.18	5.66	5.62	4.00	1.95	2.12	.75
4	4.89	5.00	6.54	7.88	4.00	1.95	2.12	.87
6	6.99	7.12	8.86	9.81	4.00	1.96	2.12	.87
8	9.14	9.28	10.94	12.06	4.50	2.14	2.75	1.00
10	11.19	11.32	13.00	14.12	4.50	2.06	2.88	1.12
12	13.29	13.44	15.35	16.50	5.00	2.36	3.00	1.12
14	15.44	15.99	17.64	18.75	5.50	2.48	3.12	1.25
16	17.56	18.11	19.84	21.25	6.00	2.98	3.25	1.25

Dimensions in Inches
Weights in Pounds

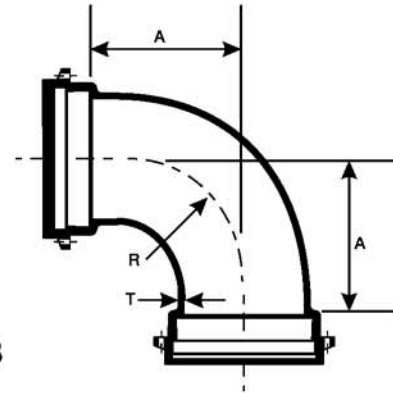
KINGER

Push-On Compact Ductile Iron Fittings As Per AWWA C153/A21.53

BENDS, 90 DEG

Size	Item No.	A	T	Wt.
3	DPOB390	4.00	.34	21
4	DPOB490	4.70	.35	34
6	DPOB690	6.20	.37	53
8	DPOB890	7.20	.39	83
10	DPOB1090	9.20	.41	124
12	DPOB1290	10.20	.43	182
14	DPOB1490	11.50	.51	230
16	DPOB1690	12.50	.52	309

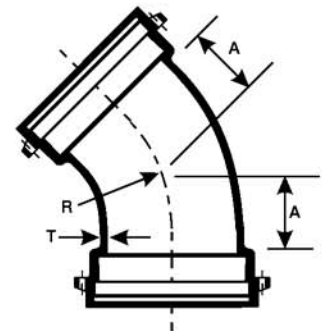
DPOB



BENDS, 45 DEG

Size	Item No.	A	T	Wt.
3	DPOB345	1.50	.34	18
4	DPOB445	2.20	.35	28
6	DPOB645	3.20	.37	44
8	DPOB845	3.70	.39	71
10	DPOB1045	4.70	.41	101
12	DPOB1245	5.70	.43	137
14	DPOB1445	5.00	.51	180
16	DPOB1645	5.50	.52	266

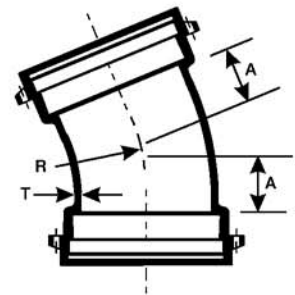
DPOB



BENDS, 22 1/2 DEG

Size	Item No.	A	T	Wt.
3	DPOB322	1.00	.34	16
4	DPOB422	1.50	.35	28
6	DPOB622	2.25	.37	42
8	DPOB822	2.50	.39	55
10	DPOB1022	3.00	.41	83
12	DPOB1222	3.50	.43	133
14	DPOB1422	-	.51	180
16	DPOB1622	5.50	.52	269

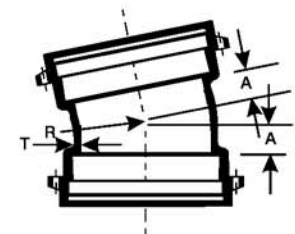
DPOB



BENDS, 11 1/4 DEG

Size	Item No.	A	T	Wt.
3	DPOB322	1.00	.34	16
4	DPOB422	1.25	.35	26
6	DPOB622	1.50	.37	36
8	DPOB822	1.75	.39	54
10	DPOB1022	2.00	.41	79
12	DPOB1222	2.25	.43	101
14	DPOB1422	-	.51	180
16	DPOB1622	5.50	.52	271

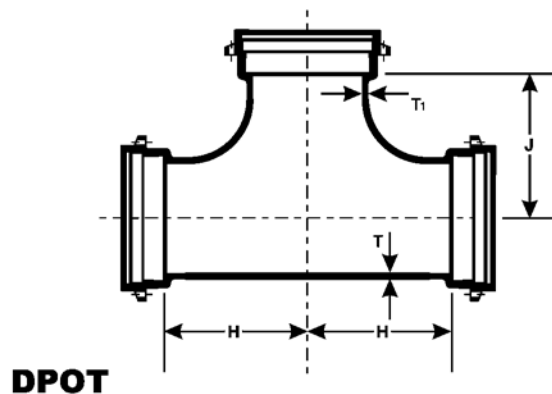
DPOB



Dimensions in Inches
Weights in Pounds

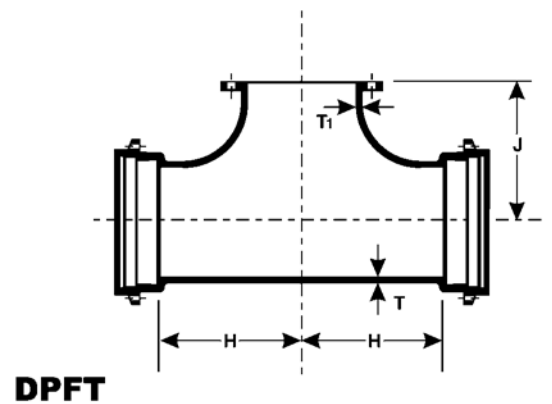
TEES

Size		Item No.	H	L	T	T1	Wt.
Run	Branch						
3	3	DPOT33	3.50	3.50	.34	.34	33
4	4	DPOT44	4.00	4.00	.35	.35	48
6	4	DPOT64	4.00	5.00	.37	.35	62
6	6	DPOT66	5.00	5.00	.37	.37	66
8	4	DPOT84	4.00	6.50	.39	.35	90
8	6	DPOT86	5.00	6.50	.39	.37	91
8	8	DPOT88	6.50	6.50	.39	.39	111
10	4	DPOT104	4.00	7.50	.41	.35	102
10	6	DPOT106	5.00	7.50	.41	.37	140
10	8	DPOT108	6.50	7.50	.41	.39	144
10	10	DPOT1010	7.50	7.50	.41	.41	141
12	4	DPOT124	4.00	8.75	.43	.35	129
12	6	DPOT126	5.00	8.75	.43	.37	143
12	8	DPOT128	6.50	8.75	.43	.39	183
12	10	DPOT1210	7.50	8.75	.43	.41	156
12	12	DPOT1212	8.75	8.75	.43	.43	201
14	6	DPOT146	7.00	11.00	.51	.37	175
14	8	DPOT148	-	-	-	-	-
14	10	DPOT1410	-	-	-	-	-
14	12	DPOT1412	-	-	-	-	-
14	14	DPOT1414	11.00	11.00	.51	.51	390
16	6	DPOT166	7.00	12.50	.52	.37	296
16	8	DPOT168	8.00	12.50	.52	.39	339
16	10	DPOT1610	9.00	12.50	.52	.41	353
16	12	DPOT1612	10.00	12.50	.52	.43	385
16	16	DPOT1616	12.50	12.50	.52	.52	486



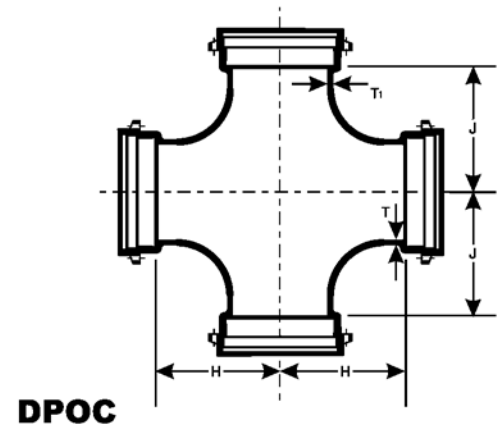
PUSH-ON X FLANGE TEES

Size		Item No.	H	L	T	T1	Wt.
Run	Branch						
4	4	DPFT44	4.00	4.00	.35	.35	49
6	4	DPFT64	4.00	5.00	.37	.35	67
6	6	DPFT66	5.00	5.00	.37	.37	75
8	4	DPFT84	4.00	6.50	.39	.35	93
8	6	DPFT86	5.00	6.50	.39	.37	102
8	8	DPFT88	6.50	6.50	.39	.39	116
10	6	DPFT106	5.00	7.50	.41	.37	123
10	8	DPFT108	6.50	7.50	.41	.39	148
12	6	DPFT126	5.00	8.75	.43	.37	158
12	8	DPFT128	6.50	8.75	.43	.39	158
14	6	DPFT146	7.00	14.00	.51	.37	247
14	8	DPFT148	7.50	14.00	.51	.39	265
16	6	DPFT166	7.00	12.50	.52	.37	308
16	8	DPFT168	8.00	12.50	.52	.39	339



CROSSES

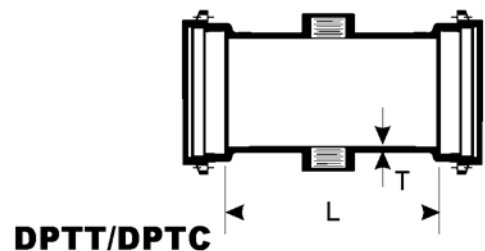
Size		Item No.	H	J	T	T1	Wt.
Run	Branch						
3	3	DPOC33	3.50	3.50	.34	.34	36
4	3	DPOC43	3.50	4.00	.35	.34	43
4	4	DPOC44	4.00	4.00	.35	.35	56
6	3	DPOC63	3.50	5.00	.37	.34	63
6	4	DPOC64	4.00	5.00	.37	.35	69
6	6	DPOC66	5.00	5.00	.37	.37	74
8	4	DPOC84	4.00	6.50	.39	.35	117
8	6	DPOC86	5.00	6.50	.39	.37	122
8	8	DPOC88	6.50	6.50	.39	.39	131
10	4	DPOC104	4.00	7.50	.41	.35	144
10	6	DPOC106	5.00	7.50	.41	.37	152
10	8	DPOC108	6.50	7.50	.41	.39	159
10	10	DPOC1010	7.50	7.50	.41	.41	165
12	4	DPOC124	4.00	8.75	.43	.35	168
12	6	DPOC126	5.00	8.75	.43	.37	174
12	8	DPOC128	6.50	8.75	.43	.39	194
12	10	DPOC1210	7.50	8.75	.43	.41	195
12	12	DPOC1212	8.75	8.75	.43	.43	260



DPOC

TAPPED TEES AND CROSSES

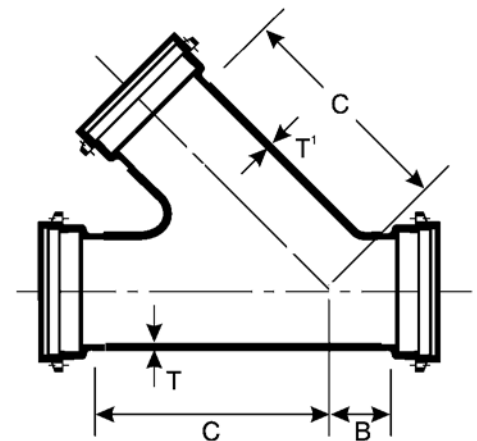
Size		TEE Item No.	CROSS Item No.	L	T	Wt.
Run	Branch					
3	3	TT3	DPTC3	3	.34	21
4	4	TT4	DPTC4	3	.35	23
6	6	TT6	DPTC6	3	.37	34
8	8	TT8	DPTC8	3	.39	52
10	10	TT10	DPTC10	3	.41	61
12	12	TT12	DPTC12	3	.43	84



DPTT/DPTC

45 DEG WYES

Size		Item No.	B	C	T	T1	Wt.
Run	Branch						
4	4	DPOY44	2.5	9.5	.35	.35	53
6	4	DPOY64	3.0	13.0	.37	.35	83
6	6	DPOY66	3.0	13.0	.37	.37	102
8	4	DPOY84	3.5	16.0	.39	.35	123
8	6	DPOY86	3.5	16.0	.39	.37	117
8	8	DPOY88	3.5	16.0	.39	.39	152
10	6	DPOY106	3.5	19.0	.41	.37	154
10	8	DPOY108	3.5	19.0	.41	.39	160
10	10	DPOY1010	3.5	19.0	.41	.41	170
12	6	DPOY126	4.5	22.5	.43	.37	236
12	8	DPOY128	4.5	22.5	.43	.39	259
12	10	DPOY1210	4.5	22.5	.51	.37	282
12	12	DPOY1212	4.5	22.5	.51	.39	314



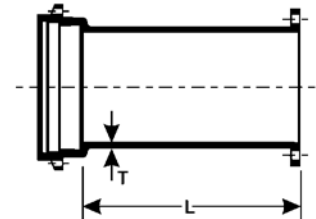
DPOY

Dimensions in Inches
Weights in Pounds

ADAPTERS, PUSH-ON X FLANGED END

Size	Item No.	L	T	Wt.
3	DPAF3	5.0	.34	13
4	DPAF4	5.0	.35	28
6	DPAF6	5.0	.37	39
8	DPAF8	5.0	.39	53
10	DPAF10	5.0	.41	81
12	DPAF12	5.0	.43	109
16	DPAF16	5.0	.48	184

DPAF



CAPS

Size	CAP Item No.	TAPPED CAP Item No.	T	Wt.
4	DPOC4	PTK4	.43	14
6	DPOC6	PTK6	.47	21
8	DPOC8	PTK8	.49	33
10	DPOC10	PTK10	.52	48
12	DPOC12	PTK12	.54	62
16	DPOC16	PTK16	.60	103

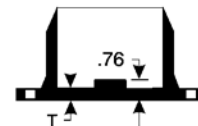
DPOC



PLUGS

Size	PLUG Item No.	TAPPED PLUG Item No.	T	Wt.
4	DPOP4	PTP4	.43	12
6	DPOP6	PTP6	.47	20
8	DPOP8	PTP8	.49	27
10	DPOP10	PTP10	.52	36
12	DPOP12	PTP12	.54	47
16	DPOP16	PTP16	.60	59

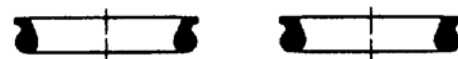
DPOP



GASKETS

Size	Item No.	Wt.
3	POG3	.25
4	POG4	.30
6	POG6	.50
8	POG8	.75
10	POG10	.80
12	POG12	1.00
14	POG14	1.30
16	POG16	1.45

POG



Dimensions in Inches
Weights in Pounds

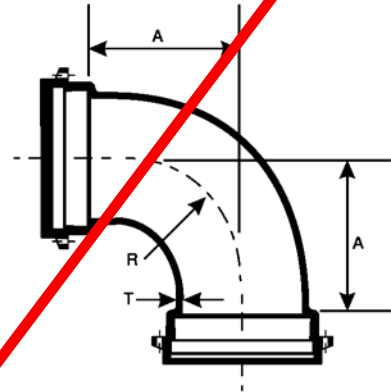
KINGER

Push-On Compact Ductile Iron Fittings As Per AWWA C153/A21.53

BENDS, 90 DEG

Size	Item No.	A	T	Wt.
3	DPOB390	4.00	.34	21
4	DPOB490	4.70	.35	34
6	DPOB690	6.20	.37	53
8	DPOB890	7.20	.39	83
10	DPOB1090	9.20	.41	124
12	DPOB1290	10.20	.43	182
14	DPOB1490	11.50	.51	230
16	DPOB1690	12.50	.52	309

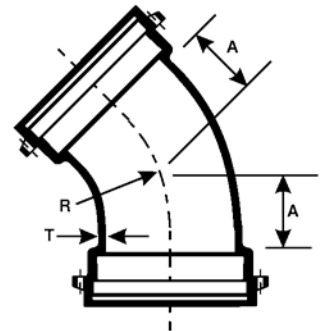
DPOB



BENDS, 45 DEG

Size	Item No.	A	T	Wt.
3	DPOB345	1.50	.34	18
4	DPOB445	2.20	.35	28
6	DPOB645	3.20	.37	44
8	DPOB845	3.70	.39	71
10	DPOB1045	4.70	.41	101
12	DPOB1245	5.70	.43	137
14	DPOB1445	5.00	.51	180
16	DPOB1645	5.50	.52	266

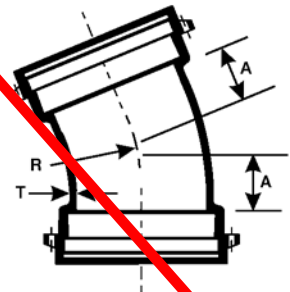
DPOB



BENDS, 22 1/2 DEG

Size	Item No.	A	T	Wt.
3	DPOB322	1.00	.34	16
4	DPOB422	1.50	.35	28
6	DPOB622	2.25	.37	42
8	DPOB822	2.50	.39	55
10	DPOB1022	3.00	.41	83
12	DPOB1222	3.50	.43	133
14	DPOB1422	-	.51	180
16	DPOB1622	5.50	.52	269

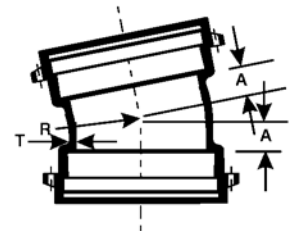
DPOB



BENDS, 11 1/4 DEG

Size	Item No.	A	T	Wt.
3	DPOB322	1.00	.34	16
4	DPOB422	1.25	.35	26
6	DPOB622	1.50	.37	36
8	DPOB822	1.75	.39	54
10	DPOB1022	2.00	.41	79
12	DPOB1222	2.25	.43	101
14	DPOB1422	-	.51	180
16	DPOB1622	5.50	.52	271

DPOB



Dimensions in Inches
Weights in Pounds